

ETERNAL TRIANGLE

Medium Up

SONNY STITT

84

$B\flat\Delta 7$ $Gm7$ $Cm7$ $F7$ $Dm7$ $G7$ $Cm7$ $F7$

$Fm7$ $B\flat 7$ $E\flat 7$ 1. $Dm7$ $G7$ $Cm7$ $F7$

2. $Dm7$ $G7$ $Cm7$ $F7$ $B\flat\Delta 7$ $Bm7$ $E7$

$B\flat m7$ $E\flat 7$ $Am7$ $D7$ $A\flat m7$ $D\flat 7$

$Gm7$ $C7$ $G\flat m7$ $C\flat 7$ $B\flat\Delta 7$ $Gm7$

$Cm7$ $F7$ $Dm7$ $G7$ $Cm7$ $F7$ $Fm7$ $B\flat 7$

$E\flat 7$ $Dm7$ $G7$ $Cm7$ $F7$ $B\flat\Delta 7$

I'LL BE SEEING YOU

IRVING KAHAL
SAMMY FAIN

Ballad or Easy Swing

$E\flat\Delta 7$ $G+7$ $Fm7$ $C7b9$ $Fm7$



$Fm7/B\flat$ $B\flat 7$ $E\flat\Delta 7$ $Fm7$ $F\sharp\circ 7$ $Gm7$



Cm $Cm\Delta 7$ $Fm7$ $B\flat 7$



$Fm7$ $B\flat+7$ $E\flat\Delta 7$ $C7$ $B\flat+7$



$E\flat\Delta 7$ $G+7$ $Fm7$ $C7b9$ $Fm7$



$Fm7/B\flat$ $B\flat 7$ $Gm7b5$ $C7b9$



$Fm7$ $Dm7b5$ $G7b9$ $Cm7$ $F13$



$Fm7b5$ $B\flat 7b9$ $E\flat 6$



KATRINA BALLERINA

WOODY SHAW

A G^{MIN7} F^7 E^bMAJ^7
 F^7 $A^bMAJ^7(\#11)$ $G^bMAJ^7(\#11)$
 G^bMIN A^bMIN $D^7(\#9)$ $D^7(\#9)$ $A^{MIN7}(b5)$ $D^7(\#9)$ G^{MIN7}
 A^bMAJ^7 $B^b7(\#11)$ A^bMAJ^7 $B^b7(\#11)$
 A^bMAJ^7 $B^b7(\#11)$ A^bMAJ^7 $B^b7(\#11)$
 A^{MAJ^7} $B^7(\#11)$ A^{MAJ^7} $B^7(\#11)$
 D^{MIN} C^{MIN} C^{MIN} B^bMIN B^bMIN A^bMIN $D^7(\#9)$
 G^{MIN7} F^7 E^bMAJ^7 F^7

2

KATRINA BALLERINA

A^b MAJ 7(#11)

G^b MAJ 7(#11)

A MIN 7(b5)

D 7(#9)

G MIN 7

32

The first staff of music is in G-flat major (two flats). It begins with a treble clef and a key signature of two flats. The first measure contains a triplet of eighth notes (G4, A4, B4) followed by a quarter note (C5). The second measure contains a triplet of eighth notes (B4, C5, D5) followed by a quarter note (E5). The third measure contains a quarter note (D5), an eighth note (C5), and a quarter note (B4). The fourth measure contains a triplet of eighth notes (A4, G4, F4) followed by a quarter note (E4). The fifth measure contains a quarter note (D4), an eighth note (C4), and a quarter note (B3). The sixth measure contains a triplet of eighth notes (A3, G3, F3) followed by a quarter note (E3). The seventh measure contains a quarter note (D3), an eighth note (C3), and a quarter note (B2). The eighth measure contains a quarter note (A2), an eighth note (G2), and a quarter note (F2). The piece ends with a double bar line.

B

B^b7(b9, #11)

(INTERLUDE)

The second staff of music is in B-flat major (two flats). It consists of eight measures, each filled with diagonal slanted lines, representing an interlude. The piece ends with a double bar line.

FORM: A B A A B A B

TOUR DE FOUR

DIZZY GILESPIE

INTRO $D_{MIN}^{7(b5)}$ D_{bMIN}^7 A^b/C B° B_{bMIN}^7 E^{b7} A_{bMAJ}^7

(BASS)

THEME $D_{MIN}^{7(b5)}$ D_{bMIN}^7 C_{MIN}^7 B° B_{bMIN}^7 E^{b7}

C_{MIN}^7 F^7 $D_{MIN}^{7(b5)}$ D_{bMIN}^7 C_{MIN}^7 B° B_{bMIN}^7 E^{b7}

A^b A^b E^{bMIN}^7 A^{b7} D^b

E^{bMIN}^7 A^{b7} D^b F_{MIN}^7 B^{b7} E^b

F_{MIN}^7 B^{b7} E^b $D_{MIN}^{7(b5)}$ D_{bMIN}^7 C_{MIN}^7 B°

B_{bMIN}^7 E^{b7} C_{MIN}^7 F^7 $D_{MIN}^{7(b5)}$ D_{bMIN}^7 C_{MIN}^7 B°

B^bMIN⁷ E^{b7} A^b D^{MIN} 7(b5) D^bMIN⁷ C^{MIN} 7 B^{MIN} 7 A⁷(#5)

B^bMIN⁷ A^{MAJ} 7 A^b A⁷ A^b

D^{MIN} 7(b5) D^bMIN⁷

A^b/C B^o B^bMIN⁷ E^{b7} A^bMAJ⁷

THINK OF ONE

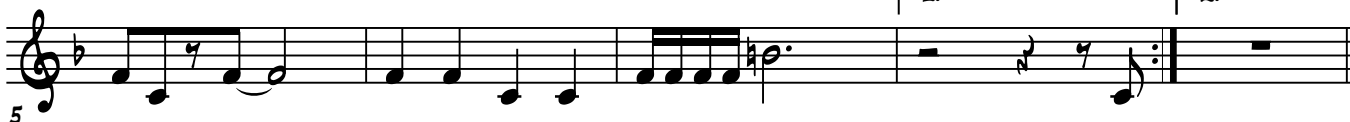
MONK

F⁷ B^{7(b5)} D^{MIN}⁷ E^{b13} A^{b13} D^{b7} G^{b13} G^{b7(b5)}



F⁷ B^{7(b5)} D^{MIN}⁷ E^{b13} A^{b13} D^{b13} G^{b13} G^{b13}

1. 2.



F⁷ C^{MIN}⁷ F⁷ B^bMAJ⁷ G^{7(b9)}



D^{MIN}⁷ G^{7(b5)} G^{MIN}^{7(b5)} C^{7(b9)}



F⁷ B^{7(b5)} D^{MIN}⁷ E^{b13} A^{b13} D^{b7} G^{b13} G^{b7(b5)}



F⁷ B^{7(b5)} D^{MIN}⁷ E^{b13} A^{b13} D^{b13} G^{b13}



Medium-Up Swing

♩ = 202

Black Nile

Wayne Shorter

56

(Intro)

F_{MI}^9 G_{bMA}^7 E_{bMI}^7 F_{MI}^7 D_{MI}^7

(trp. w/ ten. 8va b.)

B_{b13} E_{bMA}^9 $E_{MI}^9(b5)$ $A^7(\#9)$

(trp. ten.)

A D_{MI}^6 E_{b9} D_{MI}^6 C_{MI}^7 $F^7(\#9)$

(unis.)

B_{bMA}^7 $A^7(\#5)$ D_{MI}^6 E_{b9}

D_{MI}^6 E_{b9} D_{MI}^6 C_{MI}^7 $F^7(\#9)$

B_{bMA}^7 G_{MI}^7 C^9_{SUS} $A^7(\#9)$ A_{b13}

B $G_{MI}^7(11)$ C^{13} F_{MI}^7 B_{b7} E_{bMA}^7 (trp. ten.)

$G_{MI}^7(11)$ C^{13} F_{MI}^7 B_{b7} E_{bMA}^7 $A^7(\#9)$

(unis.)

C D_{MI}^6 E_{b9} D_{MI}^6 C_{MI}^7 $F^7(\#9)$

B_{bMA}^7 $A^7(\#5)$ D_{MI}^6 E_{b9}

Solo on ABC.
After solos, D.S. al Coda

D_{MI}^6 $A^7(\#5)$ D_{MI}^6 $A^7(\#5)$ D_{MI}^6

Bass walks in 4 throughout (except for bars 7 & 8 of Intro).

Prelude To A Kiss

Duke Ellington
Irving Gordon
Irving Mills

Medium Ballad

A D^9 G^9 C^7 $F_{MA}^7(B^b7)$ B^9 E^9 A^7 D_{MI}^7

If you hear a song in blue, like a flow - er cry - ing for the dew,

$D_{MI}^7(11)$ G^7 $G^{\#o7}$ C^6 $E^b{o7}$ D^{13} D_{MI}^7 $G^{7(b9)}$ C_{MA}^7 E_{MI}^7 A^7

that was my heart ser - e - nad - ing you, my pre - lude to a kiss.

D^9 G^9 C^7 $F_{MA}^7(B^b7)$ B^9 E^9 A^7 D_{MI}^7

If you hear a song that grows from my ten - der sen - ti - ment - tal woes,

$D_{MI}^7(11)$ G^7 $G^{\#o7}$ C^6 $E^b{o7}$ D^{13} D_{MI}^7 $G^{7(b9)}$ C_{MA}^7 $F^{\#MI}^7$ B^7

that was my heart try - ing to com - pose a pre - lude to a kiss.

B E_{MA}^7 $C^{\#MI}^7$ $F^{\#MI}^7(b5)$ B^7 E_{MA}^7 $C^{\#MI}^7$ $F^{\#MI}^7$ B^7

Though it's just a sim - ple mel - o - dy with noth - ing fan - cy, noth - ing much,

E_{MA}^7 $C^{\#MI}^7$ $F^{\#MI}^7(b5)$ B^7 E_{MI}^7 A^7 D_{MI}^7 $E^b_{MI}^7$ E_{MI}^7 $E^b_{MI}^7$

you could turn it to a sym - pho - ny, a Schu - bert tune with a Gersh - win touch. Oh,

C D^9 G^9 C^7 $F_{MA}^7(B^b7)$ B^9 E^9 A^7 D_{MI}^7

how my love song gent - ly cries for the ten - der - ness with - in your eyes,

$D_{MI}^7(11)$ G^7 $G^{\#o7}$ C^6 $E^b{o7}$ D^{13} D_{MI}^7 $G^{7(b9)}$ C_{MA}^7 $(E_{MI}^7A^7)$

love is a pre - lude that nev - er dies, a pre - lude to a kiss.

Alternate changes
for bar 8 of letter B:

G^7	A^b7	A^7	E^b9
F^9	G^b9	G^9	A^b9
B^b13	B^13	C^13	D^b13

304

FALLING OUT

I.BUTMAN

INTRO FMAJ⁷ GMIN⁷

A FMAJ⁷ GMIN⁷ GMIN⁷ FMAJ⁷ GMIN⁷

GMIN⁷ **B** AbMAJ⁷ Ab^b/Bb

Bb⁷ AbMAJ⁷ F/G G⁷(#11) **C** CMIN⁷

B⁷(13) **D** BbMIN⁷ Ab^b7(13)

Ab^b7(13) BbMIN⁷ Gb^b7(13)

Gb^b7(13) **E** BMIN⁷ AMAJ⁷ GMAJ⁷

Ab^b/C

FMAJ⁷ FINE FORM; A B C D E

BLUES

♩ = 260

Вячеслав Назаров

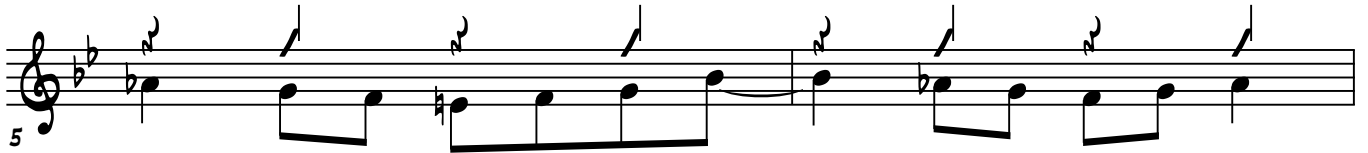
A

B^{b7(#11)}

E^{MAJ7}



B^b



E^{b7sus}

F^{MIN7}

G^{bMAJ7}

A^{b7sus}

B^{b7}

C^{7sus}

F



B^{b7(#11)}

D^{b9}



B

B^{b7}



E^{b7}

B^{b7}

G⁷



C⁷

F⁷

B^{b7}

G⁷

C^{MIN7}

F⁷



C

B^{b7(#11)}

SOLO FILL



FINE

Играть C между соло

Уходит вечер (Leaving in the Evening)

Александр Варламов

1 C7 C7(#5) F6 Ab° Gm7 C7

5 Gm7 C9 Fmaj9

9 C7 C7(#5) F6 Ab° Gm7 C7

14 Gm7 C9 F6 Bb6 F6 F7(#5)

18 Bb6 B° F6 Cm6 D7(b9)

22 Gm7 Gm7 Bbm7 G9

25 C7 C7(#5) F6 Ab° Gm7 C7

30 Gm7 C6 F6 Db7 F6